

Instructions for Use – **Compressed Air Operation (1/4" connector)**

- Fill the bottle up to the “Max” indicator.
- Insert pump assembly into the bottle, and screw-on very tightly, so the seals can maintain sufficient pressure.
- Extend the pump plunger (no. 20) to its maximum length.
- Attach the compressed air connection sleeve (no. 30, 1/4" connector) on to the compressed air coupling for approximately 3 – 5 seconds, in order to build up pressure in the bottle. Maximum pressure 3 bars * 43.5 psi
- Slowly turn the nozzle to adjust spray pattern from fine mist to jet.
- If liquid drops out of the nozzle on completion of spraying, spray for approx. 2 – 3 seconds to release the trapped compressed air.

Instructions for Use – **Manual Operation**

- Fill the bottle up to the “Max” indicator..
- Insert pump assembly into the bottle, and screw-on very tightly, so the seals can maintain sufficient pressure.
- Extend pump plunger (no. 20) and stroke 20 – 30 times.
- Slowly turn the nozzle to adjust spray pattern from fine mist to jet.
- Always release pressure in the unit before storage.

Warranty

Sprayers carry a limited Warranty, which is limited to replacement of defective part(s) only. Damage attributable to improper use, faulty maintenance, the effects of chemicals or normal wear and tear (Seals/o-rings) is excluded from the Warranty.

If defective, the sprayer(s) should be returned to FBS for examination with transportation prepaid. If defects are covered by the Warranty, the least expensive inbound/outbound charges will be borne by FBS/Manufacturer.

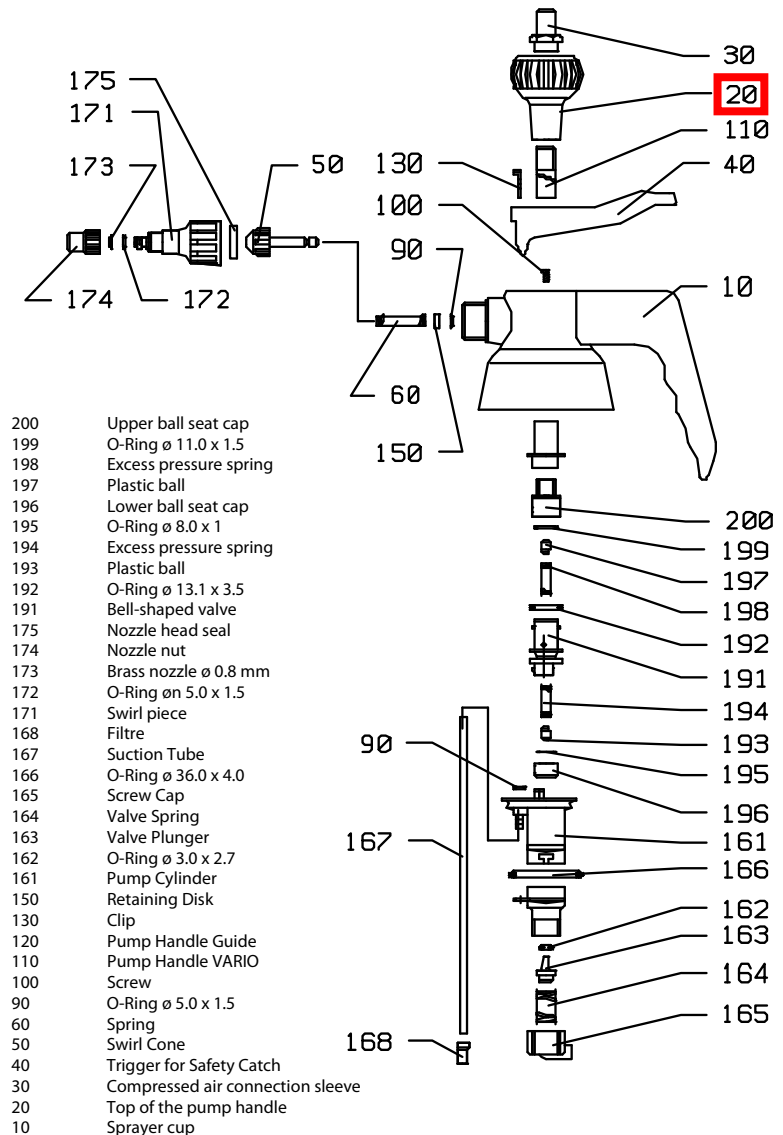
All returned and repairable sprayers not covered by the Warranty will be repaired/re-conditioned according to the repair fee/schedule, and charges borne by the customer.

For more information visit our web site at www.fbsdistribution.com and consult with FBS for chemical compatibility before using the sprayer.



Manual

VARIO Compressed Air Sprayer 50402 KPV/FPE Model



Manufactured in Germany
FBS Distribution Co., Inc.

www.fbsdistribution.com