

Instructions for Use – Manual Operation

- Fill the bottle up to the “Max” indicator.
- Insert pump assembly into the bottle, and screw-on very tightly, so the seals can maintain sufficient pressure.
- Extend pump plunger and stroke 20 – 30 times.
- For spraying, press the trigger. Slowly turn the nozzle to adjust spray pattern from fine mist to jet.
- Always release pressure in the unit before storage.
- Immediately after use, clean the pump sprayer with clear water.
- Occasionally lubricate the pump barrel with a few drops of light oil.

Warranty

Sprayers carry a limited Warranty, which is limited to replacement of defective part(s) only. Damage attributable to improper use, faulty maintenance, the effects of chemicals or normal wear and tear (Seals/o-rings) is excluded from the Warranty.

If defective, the sprayer(s) should be returned to FBS for examination with transportation prepaid. If defects are covered by the Warranty, the least expensive inbound/outbound charges will be borne by FBS/Manufacturer. All returned and repairable sprayers not covered by the Warranty will be repaired/reconditioned according to the repair fee/schedule, and charges borne by the customer.

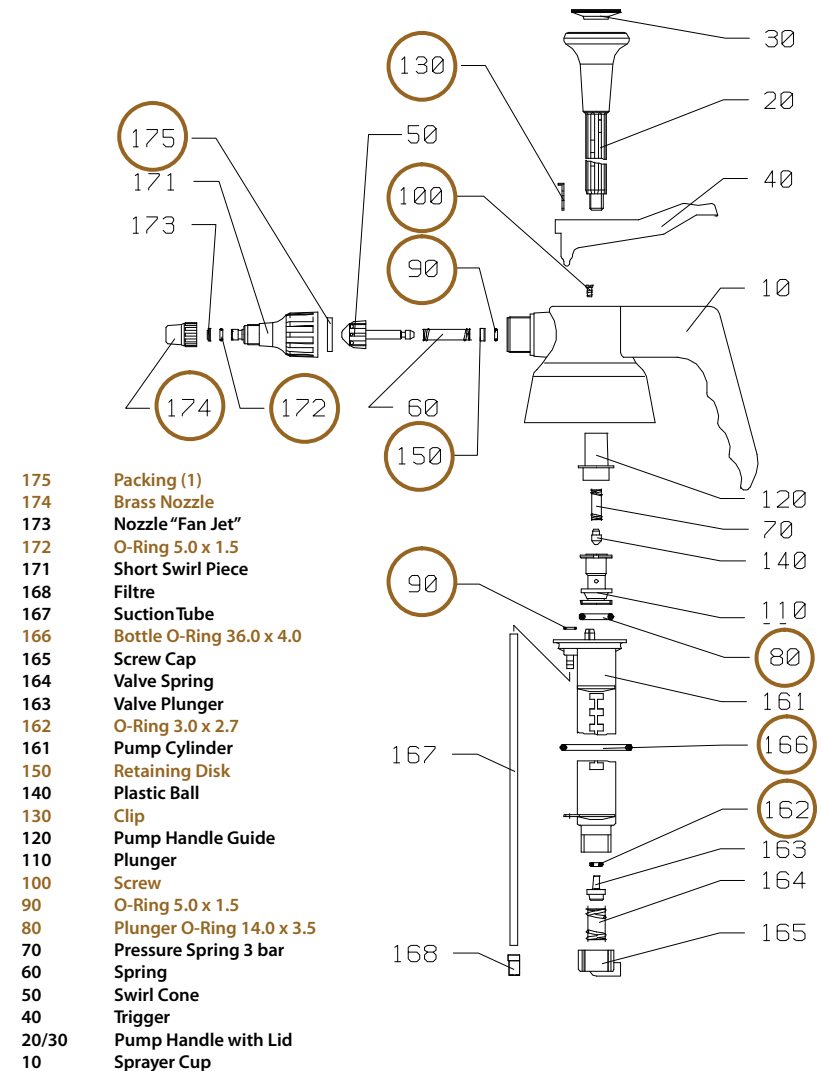
For more information visit our web site at www.fbsdistribution.com and consult with FBS for chemical compatibility before using the sprayer.



#50275 KPV repair kit

(For 50200 & 50402 Sprayer)

Contains part no: 80, 90, 100, 130, 150, 162, 166, 172, 174, and 175 only



Manufactured in Germany
 FBS Distribution Co., Inc.
www.fbsdistribution.com